



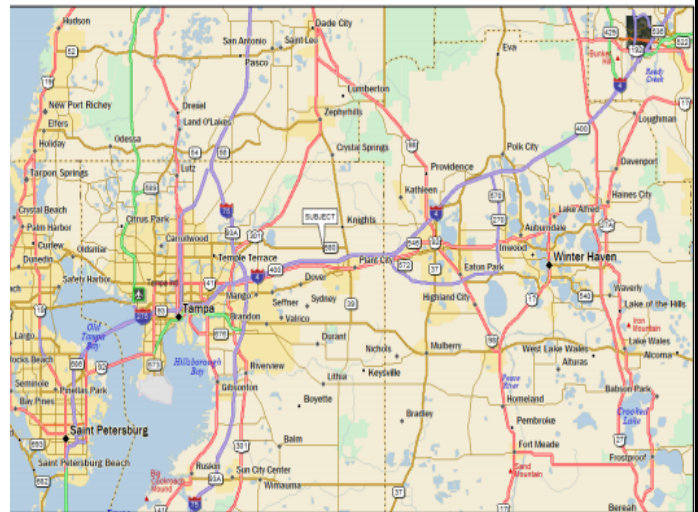
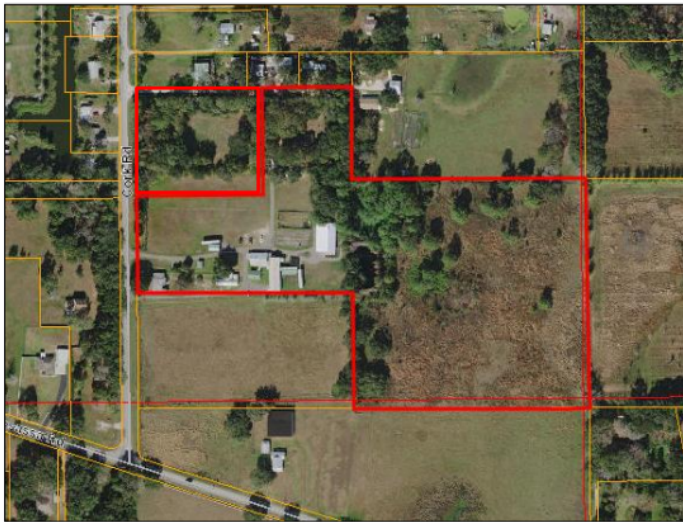
**THE DIKMAN
COMPANY**

Licensed Real Estate Broker

Commercial/Industrial Real Estate Services

Raising the Bar in Customer Satisfaction

19 acre site for sale - 2902 Cork Road, Plant City GREAT development site for single-family homes



- Located approximately 1.6 miles northeast of I-4 interchange at Branch Forbes Road; 2.3 miles northwest of downtown Plant City; 18 miles east of downtown Tampa
- Folio Numbers: 081272-0000 and 081272-0050
- 19.13 gross acres MOL; 17.23 net upland acres; Zoned ASC-1
- Property appears capable of supporting 11-12 (1) acre homesites, perhaps more
- Flood Zone: X (above 100-year flood plain, per FEMA Map)
- 590 feet along easterly side of Cork Road
- 2902 Cork Road, Plant City, Hillsborough County, FL 33565
- \$495,000.00



Erika Z. Matscherz
The Dikman Company
Licensed Real Estate Associate
813.215.4342 cell
813.251.5288 ext. 102

erika@dikman.com

Sales
Leasing
Property Management
Development
Tenant Representation
Investment Counseling
Asset Analysis

Michael English
The Dikman Company
Licensed Real Estate Associate
813.505.4892 cell
813.251.5288 ext. 104

michael@dikman.com

No warranty or representation, expressed or implied, is made as to the accuracy of the information contained herein, and same is submitted subject to errors, omissions, change of price, rental or other conditions, withdrawal without notice, and to any special conditions by our principals.



**THE DIKMAN
COMPANY**

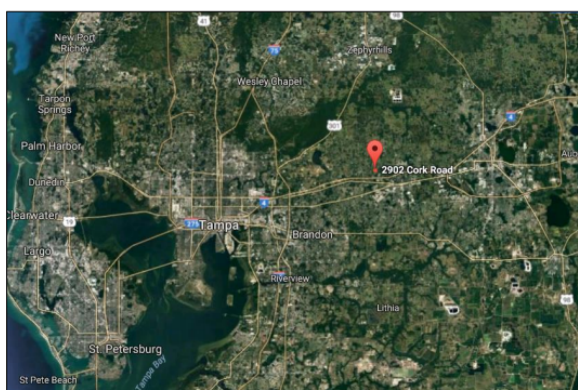
Licensed Real Estate Broker

Commercial/Industrial Real Estate Services

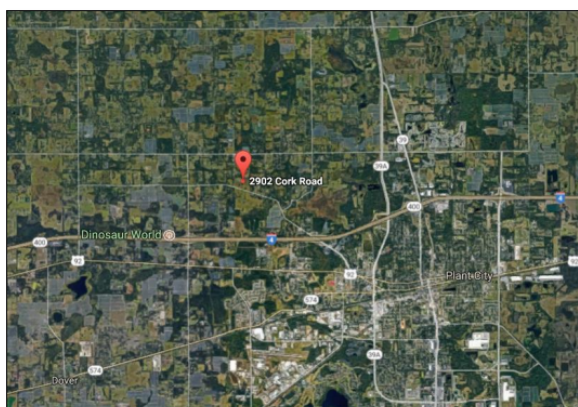
Raising the Bar in Customer Satisfaction

19 acre site for sale - 2902 Cork Road, Plant City GREAT development site for single-family homes

Area Aerial Photograph



Neighborhood Aerial Photograph



View South



Erika Z. Matscherz
The Dikman Company
Licensed Real Estate Associate
813.215.4342 cell
813.251.5288 ext. 102

erika@dikman.com

Sales
Leasing
Property Management
Development
Tenant Representation
Investment Counseling
Asset Analysis

Michael English
The Dikman Company
Licensed Real Estate Associate
813.505.4892 cell
813.251.5288 ext. 104

michael@dikman.com

No warranty or representation, expressed or implied, is made as to the accuracy of the information contained herein, and same is submitted subject to errors, omissions, change of price, rental or other conditions, withdrawal without notice, and to any special conditions by our principals.



**THE DIKMAN
COMPANY**
Licensed Real Estate Broker
Commercial/Industrial Real Estate Services

Raising the Bar in Customer Satisfaction

19 acre site for sale - 2902 Cork Road, Plant City GREAT development site for single-family homes



1. View northerly toward north building



3. View westerly toward Cork Road



5. View westerly across southwest section



7. View south along Cork Road, subject on left



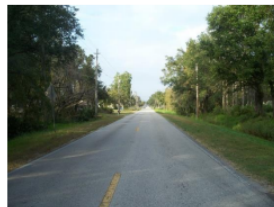
2. View east along entry to building group



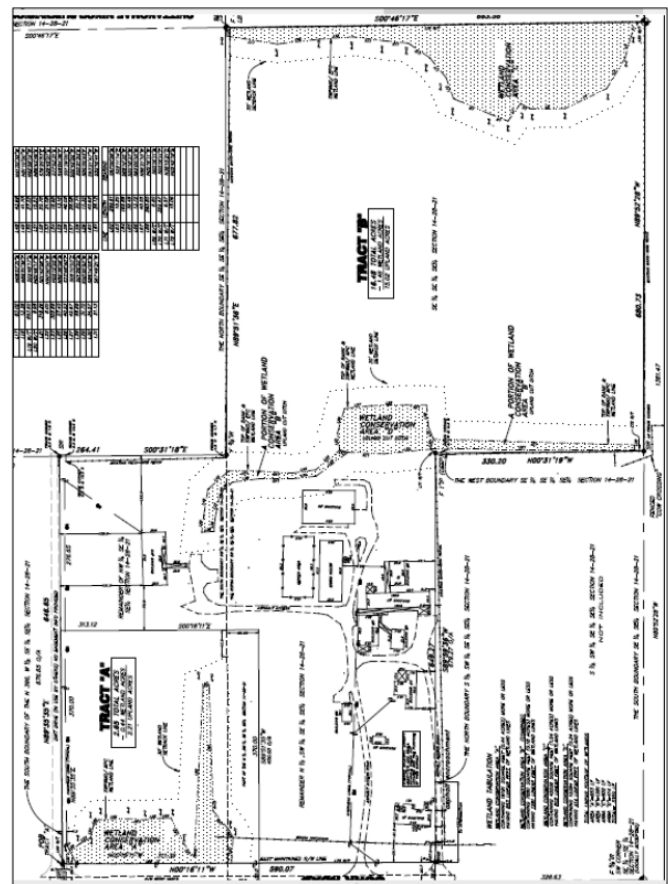
4. View westerly toward wetlands 'A'



6. View south, wetlands 'B-South' on left



8. View north along Cork Road, subject on right



Erika Z. Matscherz
The Dikman Company
Licensed Real Estate Associate
813.215.4342 cell
813.251.5288 ext. 102

erika@dikman.com

Sales
Leasing
Property Management
Development
Tenant Representation
Investment Counseling
Asset Analysis

Michael English
The Dikman Company
Licensed Real Estate Associate
813.505.4892 cell
813.251.5288 ext. 104

michael@dikman.com

No warranty or representation, expressed or implied, is made as to the accuracy of the information contained herein, and same is submitted subject to errors, omissions, change of price, rental or other conditions, withdrawal without notice, and to any special conditions by our principals.